

LR17

High power 24V linear LED cove lighting



Install sheet - Page 1

SPECIFICATION

LED surfaced mounted luminaires are class III for Safety Extra Low Voltage **DC** supply. The product should only be used with a supplied or LightGraphix approved **24 DC** constant voltage driver.

Suitable for mounting on normally flammable surfaces.

Lamp: **24V**.

This fitting is **IP40** rated.

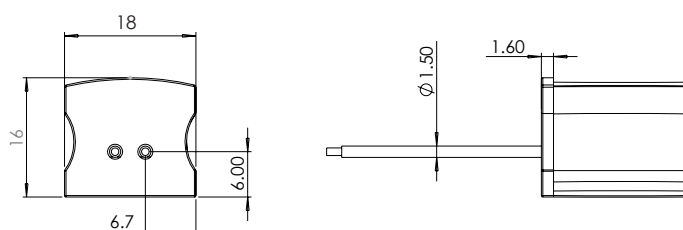
Lumen Maintenance: Lifetime (25° ambient) L80B50 at 50,000 hours

LR17 - 24V			
Product & LED Output Code	Power Output	Max Ambient	Energy Class
LR17/LT500	3W/m	-20° to 45°	D
LR17/LT900	6W/m	-20° to 45°	D
LR17/LT1400	9W/m	-20° to 45°	D
LR17/LT2000	13W/m	-20° to 45°	D

DIAGRAM

/NF

LR17/NF



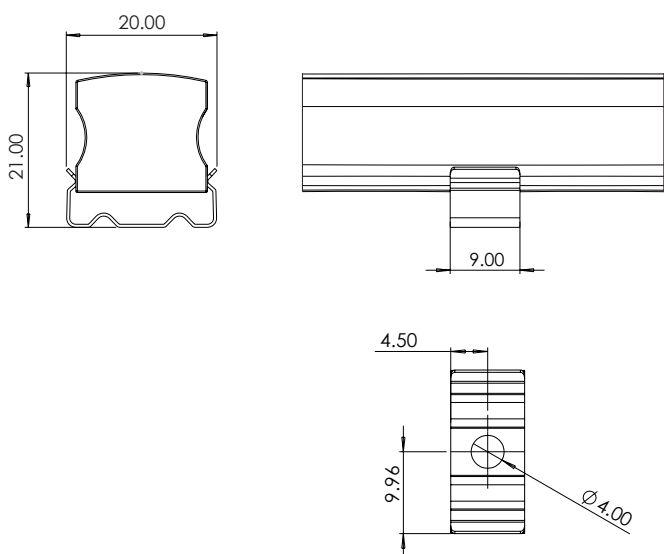
INSTALLATION

/NF

1. See install diagram for either surface mounted or recessed option for specific dimensions. If recessed install is required, please check groove size requirements.
2. Apply the fixing and secure.
3. Wire luminaire to a specified driver.

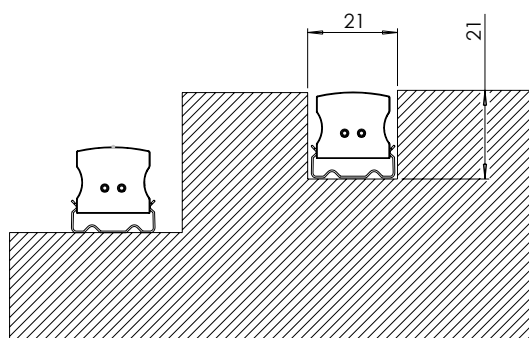
/SC

LR17/SC



/SC

1. See install diagram below for either surface mounted or recessed option for specific dimensions. If recessed install is required, please check groove size requirements.
2. Using one self tapping M3 screw per bracket, screw the stainless steel spring clip onto the mounting surface. We recommend a spring clips every 300mm.
3. Wire luminaire to a specified driver.



LR17

High power 24V linear LED cove lighting

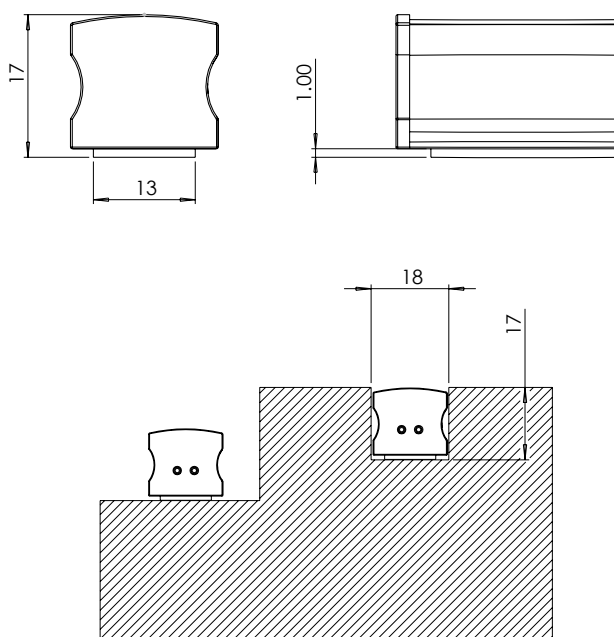


Install sheet - Page 2

DIAGRAM

/3M

LR17/3M



INSTALLATION

/3M

1. See install diagram below for either surface mounted or recessed option for specific dimensions. If recessed install is required, please check groove size requirements.
2. Peel off the 3M adhesive backing and position the product. Press firmly along the fitting to allow the adhesive to grip.
3. Wire luminaire to a specified driver.

SEE CONSTANT VOLTAGE WIRING SHEET FOR IN PARALLEL WIRING DIAGRAM

Do not power up until fitting is wired correctly! Constant voltage LEDs must be wired in parallel, polarity is critical. See table for polarity of cables.

IMPORTANT

Make sure that all cables and connections are securely connected before switching on the power. Failing to do this can lead to failure of the LEDs and/or the driver. If the LEDs do not work upon power up, turn off the power source immediately and check the polarity of the wiring. To reduce the risk of strangulation the flexible wiring connected to this luminaire shall be effectively fixed to the wall if the wiring is within arm's reach. Any attempt made to open up and/or modify the luminaire will invalidate the manufacturers warranty. This is inclusive of but not limited to removal of the LightGraphix product label or removal of any parts from the main body of the product including bezels, electrical components and factory fitted fixing methods (unless otherwise stated in these instructions). Luminaire should be wired no further than 5 meters away from a SELV constant voltage LED driver (based on a 1mm squared cross sectional cable). Forward voltage of luminaire is 24V. Terminal block not included. Installation must be performed by a qualified person. For connections made in dry environments 2 x Wago 221-2411 or connections with similar specifications are recommended. For damp or wet environments a connector of the same electrical specification but with a suitable IP rating should be used.

CORE COLOUR & POLARITY		
Colour of Cable	Red	Black
Polarity	+	-

MAINTENANCE

Clean with soft damp cloth
LED: Please contact LightGraphix

CONNECTION

- Wire Connection Method: Clamp
- No. of Positions: 1Way
- Rated Voltage: 450V
- Rated Current: 32A
- Wire Size (stranded): 18 - 14AWG